

GENERAL NOTES

- A. ANY PROPOSED LIGHT FIXTURES ARE TO BE INSTALLED ON PRIVATE PROPERTY, ADJACENT TO THE PUBLIC RIGHT OF WAY. LIGHT FIXTURES SHALL BE ORIENTED IN SUCH A MANNER OR LIMITED IN LUMEN OUTPUT TO PREVENT GLARE PROBLEMS AND SHALL NOT EXCEED NATIONAL I.E.S. LIGHTING STANDARDS FOR DISABILITY GLARE.
- B. ALL FIXTURES SHALL BE FULL CUT-OFF, DARK SKY COMPLIANT. RE: EXTERIOR LUMINAIRE SCHEDULE AND ATTACHED CUTSHEETS FOR ADDITIONAL INFORMATION.
- C. ALL EXTERIOR LIGHTING FIXTURES TO BE CONTROLLED VIA TIMECLOCK AND/OR PHOTO SENSORS. RE: ONE LINE DIAGRAM FOR ADDITIONAL INFORMATION.
- D. REFER TO ATTACHED COMCHECK COMPLIANCE DOCUMENTATION FOR ALLOWED/INSTALLED WATTAGE OF PROPOSED EXTERIOR LIGHTING FIXTURES.
- E. VERIFY POLE HEIGHT REQUIRED AT EACH LOCATION WITH BASE HEIGHT AND SURROUNDING GRADE. ELEVATION PROVIDED IN LUMINAIRE SCHEDULE IS HEIGHT OF FIXTURE TO ADJACENT GRADE.

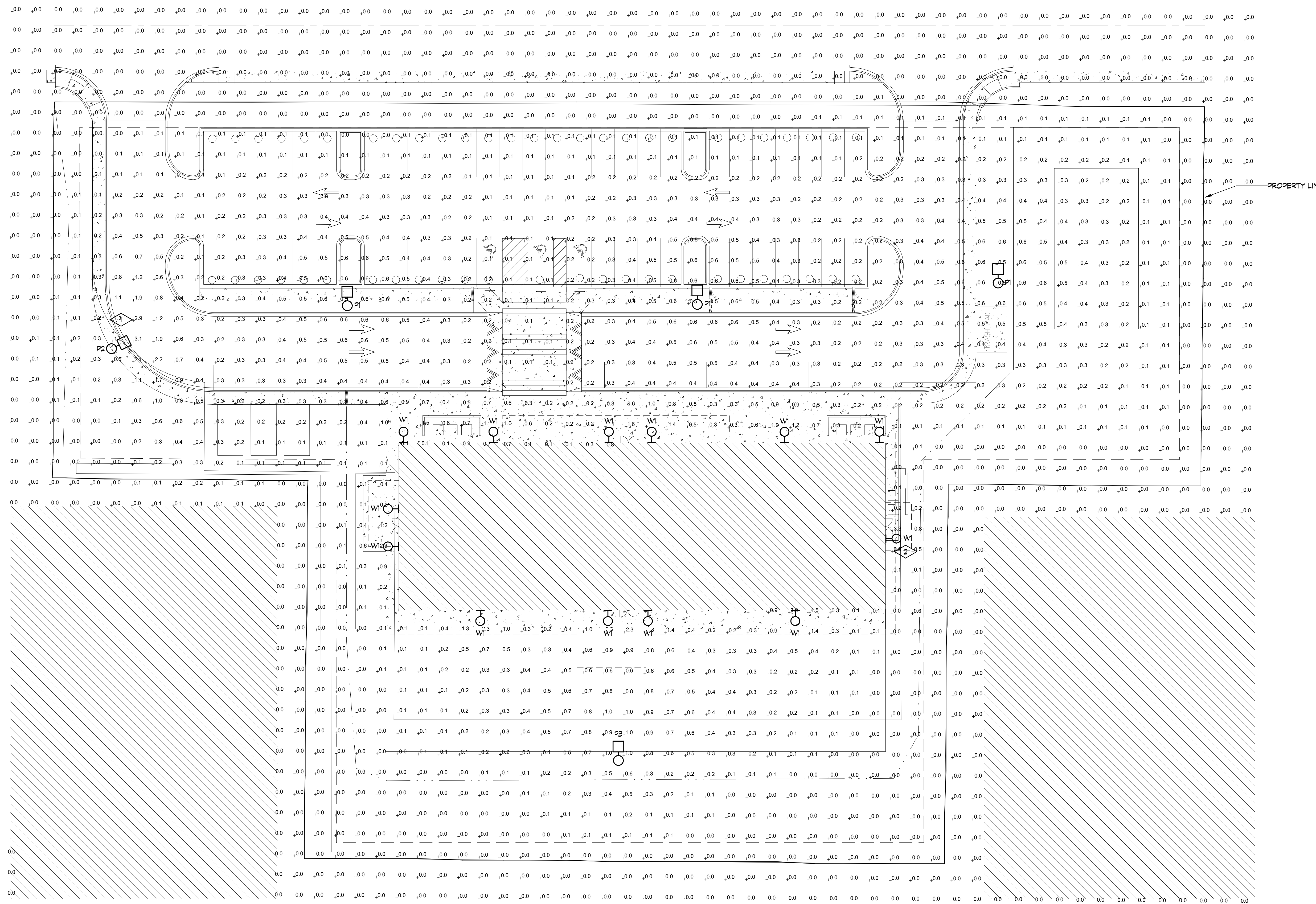
DETAIL NOTES THIS SHEET

- 1. P2 FIXTURE DIMMED TO 80%
- 2. THIS FIXTURE TO BE MOUNTED AT 6FT AND DIMMED TO 80%.

EXTERIOR LUMINAIRE SCHEDULE					
KEY	LAMP	DESCRIPTION	CEILING (DEPTH)	MANUFACTURER #	VOLT
P1	33.2W LED, 4200 LUM, 2700K	POLE LIGHT, TYPE VS DISTRIBUTION, 0-10V DIMMING, FINISH SELECTED BY ARCH.	POLE (+20)	LITHONIA / DBXO LED P1 27K 80CRI TSM MVOLT XX DMG XX XX	120/277
P2	33.2W LED, 4200 LUM, 2700K	POLE LIGHT, TYPE II SHORT DISTRIBUTION, 0-10V DIMMING, FINISH SELECTED BY ARCH.	POLE (+20)	LITHONIA / DBXO LED P1 27K 80CRI TIS MVOLT XX DMG XX XX	120/277
P3	33.2W LED, 4200 LUM, 2700K	POLE LIGHT, TYPE IV MEDIUM DISTRIBUTION, 0-10V DIMMING, FINISH SELECTED BY ARCH.	POLE (+20)	LITHONIA / DBXO LED P1 27K 80CRI TSM MVOLT XX DMG XX XX	120/277
W1	7W LED, 690 LUM, 2700K	WALLPACK, TYPE II SHORT DISTRIBUTION,	WALLPACK (+10)	LITHONIA / WIDGEL LED PO 27K 80CRI VF	120/277

NOTES: NOTIFY ENGINEER OF ANY DISCREPANCIES BETWEEN MODEL NUMBERS AND DESCRIPTIONS PRIOR TO ORDERING
VERIFY CEILING INSULATION W/ GC AND NOTIFY ENGINEER OF ANY IC RATING CONFLICTS PRIOR TO ORDERING

**GILCREST HEAD START SCHOOL
SITE DEVELOPMENT PLAN**
LOCATED AT SECTION 28, TOWNSHIP 04 NORTH, RANGE 66 WEST,
LOTS 6-10; AND LOTS 13-21, ALL OF BLOCK 11, TOWN OF GILCREST,
COUNTY OF WELD, STATE OF COLORADO



NO.	DESCRIPTION	BY	DATE

GILCREST HEAD START SCHOOL
 LOTS 6-10; AND LOTS 13-21, ALL OF BLOCK 11,
 GILCREST, COLORADO
SITE PHOTOMETRIC

DRAWN: CY
 DATE: 11.20.2023
 CHECKED: MV
 DATE: 11.20.2023
 REVISION #:
 DATE: 11.20.2023
 JOB NO: #25063



11/20/2023 9:52:35 AM



Specifications
 EPA: 0.44 ft² (0.04 m²)
 Length: 26.18" (66.5 cm)
 Width: 14.06" (35.7 cm)
 Height H1: 2.26" (5.7 cm)
 Height H2: 7.46" (18.9 cm)
 Weight: 23 lbs (10.4 kg)

D-Series Size 0 LED Area Luminaire



Series	
LEDs	
Color temperature	
Color Rendering Index	
Distribution	
Voltage	
Mounting	

Introduction

The modern styling of the D-Series features a highly refined aesthetic that blends seamlessly with its environment. The D-Series offers the benefits of the latest in LED technology into a high performance, high efficacy, long-life luminaire.

The photometric performance results in sites with excellent uniformity, greater pole spacing and lower power density. D-Series outstanding photometry aids in reducing the number of poles required in area lighting applications, with typical energy savings of 70% and expected service life of over 100,000 hours.

Ordering Information

DSX0 LED	Series	LEDs	Color temperature ¹	Color Rendering Index ²	Distribution	Voltage	Mounting	Shipped included				
DSX0 LED	Forward optics	(this section 70CRI only)		70CRI	TSM Type V medium	MVOLT 120V-277V ¹	SPA Square pole mounting (8" drilling, 3" min. 50 pole)	SPA Square pole mounting (8" drilling, 3" min. 50 pole)				
		P1 P5	30K 3000K						T15 Type I short	HVOLT 347V-480V ¹	RPA Round pole mounting (8" drilling, 3" min. 50 pole)	
		P2 P6	40K 4000K						T3M Type II medium	IVOLT 277V-480V ¹	SMS Square pole mounting (8" drilling, 3" min. 50 pole)	
		P3 P7	50K 5000K						T5W Type IV wide	120 v.l.n.	BLCA Type II backlight control ³	
		P4	(this section 80CRI only, extended lead times apply)						T3LG Type III low glare ⁴	208 v.l.n.	BLCA Type IV backlight control ³	
		P10 ¹ P12 ¹	27K 2700K						T4M Type IV medium	240 v.l.n.	BLCC Type IV backlight control ³	
		P11 ¹ P13 ¹	30K 3000K						T4W Type IV wide	277 v.l.n.	BLCO Left corner cutoff ³	
Rotated optics	P10 ¹ P12 ¹ P11 ¹ P13 ¹	27K 2700K	80CRI	T4LG Type IV low glare ⁴	240 v.l.n.	LCCO Left corner cutoff ³	347 v.l.n.	SPASN Square narrow pole mounting (8" drilling, 3" min. 50 pole)				
									30K 3000K	T4M Type IV medium	277 v.l.n.	RCCO Right corner cutoff ³
									35K 3500K	T4W Type IV wide	277 v.l.n.	WBA Wall bracket ⁵
									40K 4000K	T4M Type IV medium	277 v.l.n.	MA Mast arm adapter (mounts on 2.38" OD horizontal track)
									50K 5000K	T4W Type IV wide	277 v.l.n.	
										T4M Type IV medium	277 v.l.n.	
										T4W Type IV wide	277 v.l.n.	

Control options	Other options	Finish required
Shipped installed N1AIR2 P1RH1 n-light AIR gen 2 enabled with bi-level motion / ambient sensor, 8-40" mounting height, ambient sensor enabled at 26" ¹ 11.8" ¹ P1R High/low motion/ambient sensor, 8-40" mounting height, ambient sensor enabled at 26" ¹ 11.8" ¹ PER NEMA twist lock receptacle only (controls ordered separately) ¹ ¹ PER5 Five-pin receptacle only (controls ordered separately) ¹ ¹	Shipped installed HS Houseshield (black finish standard) ⁶ L90 Left rotated optics ⁷ R90 Right rotated optics ⁷ CCE Coastal Construction ⁸ HA 50% ambient operation ⁹ BAA Bay America's Act Compliant Single face (120, 277, 347V) ¹⁰ DF Double face (208, 240, 480V) ¹⁰ Shipped separately EGR External Glue Shield (reversible, field install required, matches housing finish) BSDB Bird Spikes (field install required)	DDBD Dark Bronze DBLD Black DNAX Natural Aluminum DWHD White DDBTD Textured dark bronze DBLBD Textured black DNATD Textured natural aluminum DWNGD Textured white

LITHONIA LIGHTING One Lithonia Way • Conyers, Georgia 30012 • Phone: 1-800-705-SERV (7378) • www.lithonia.com
 © 2011-2023 Acuity Brands Lighting, Inc. All rights reserved.

- 4. Lighting designated for dusk-to-dawn operation is controlled by an astronomical time switch or photosensor.
- 5. All time switches are capable of retaining programming and the time setting during loss of power for a period of at least 10 hours.

Exterior Lighting Efficacy:

- 6. All exterior building grounds luminaires that operate at greater than 100W have minimum efficacy of 60 lumen/watt.

Exceptions:

- Lighting that has been claimed as exempt and is identified as such in Section 3 table above.
- Lighting that is specifically designated as required by a health or life safety statute, ordinance, or regulation.
- Emergency lighting that is automatically off during normal building operation.
- Lighting that is controlled by motion sensor.

Exterior Lighting PASSES. Design 96% better than code.

Section 5: Compliance Statement

Compliance Statement: The proposed exterior lighting design represented in this document is consistent with the building plans, specifications and other calculations submitted with this permit application. The proposed lighting system has been designed to meet the 2009 IECC requirements in COMcheck-Web and to comply with the mandatory requirements in the Requirements Checklist.

Name - Title	Signature	Date

GILCREST HEAD START SCHOOL SITE DEVELOPMENT PLAN

LOCATED AT SECTION 28, TOWNSHIP 04 NORTH, RANGE 66 WEST, LOTS 6-10; AND LOTS 13-21, ALL OF BLOCK 11, TOWN OF GILCREST, COUNTY OF WELD, STATE OF COLORADO



Specifications
 EPA: 0.44 ft² (0.04 m²)
 Length: 26.18" (66.5 cm)
 Width: 14.06" (35.7 cm)
 Height H1: 2.26" (5.7 cm)
 Height H2: 7.46" (18.9 cm)
 Weight: 23 lbs (10.4 kg)

D-Series Size 0 LED Area Luminaire



Series	
LEDs	
Color temperature	
Color Rendering Index	
Distribution	
Voltage	
Mounting	

Introduction

The modern styling of the D-Series features a highly refined aesthetic that blends seamlessly with its environment. The D-Series offers the benefits of the latest in LED technology into a high performance, high efficacy, long-life luminaire.

The photometric performance results in sites with excellent uniformity, greater pole spacing and lower power density. D-Series outstanding photometry aids in reducing the number of poles required in area lighting applications, with typical energy savings of 70% and expected service life of over 100,000 hours.

Ordering Information

DSX0 LED	Series	LEDs	Color temperature ¹	Color Rendering Index ²	Distribution	Voltage	Mounting	Shipped included				
DSX0 LED	Forward optics	(this section 70CRI only)		70CRI	TSM Type V medium	MVOLT 120V-277V ¹	SPA Square pole mounting (8" drilling, 3" min. 50 pole)	SPA Square pole mounting (8" drilling, 3" min. 50 pole)				
		P1 P5	30K 3000K						T15 Type I short	HVOLT 347V-480V ¹	RPA Round pole mounting (8" drilling, 3" min. 50 pole)	
		P2 P6	40K 4000K						T3M Type II medium	IVOLT 277V-480V ¹	SMS Square pole mounting (8" drilling, 3" min. 50 pole)	
		P3 P7	50K 5000K						T5W Type IV wide	120 v.l.n.	BLCA Type II backlight control ³	
		P4	(this section 80CRI only, extended lead times apply)						T3LG Type III low glare ⁴	208 v.l.n.	BLCA Type IV backlight control ³	
		P10 ¹ P12 ¹	27K 2700K						T4M Type IV medium	240 v.l.n.	BLCC Type IV backlight control ³	
		P11 ¹ P13 ¹	30K 3000K						T4W Type IV wide	277 v.l.n.	BLCO Left corner cutoff ³	
Rotated optics	P10 ¹ P12 ¹ P11 ¹ P13 ¹	27K 2700K	80CRI	T4LG Type IV low glare ⁴	240 v.l.n.	LCCO Left corner cutoff ³	347 v.l.n.	SPASN Square narrow pole mounting (8" drilling, 3" min. 50 pole)				
									30K 3000K	T4M Type IV medium	277 v.l.n.	RCCO Right corner cutoff ³
									35K 3500K	T4W Type IV wide	277 v.l.n.	WBA Wall bracket ⁵
									40K 4000K	T4M Type IV medium	277 v.l.n.	MA Mast arm adapter (mounts on 2.38" OD horizontal track)
									50K 5000K	T4W Type IV wide	277 v.l.n.	
										T4M Type IV medium	277 v.l.n.	
										T4W Type IV wide	277 v.l.n.	

Control options	Other options	Finish required
Shipped installed N1AIR2 P1RH1 n-light AIR gen 2 enabled with bi-level motion / ambient sensor, 8-40" mounting height, ambient sensor enabled at 26" ¹ 11.8" ¹ P1R High/low motion/ambient sensor, 8-40" mounting height, ambient sensor enabled at 26" ¹ 11.8" ¹ PER NEMA twist lock receptacle only (controls ordered separately) ¹ ¹ PER5 Five-pin receptacle only (controls ordered separately) ¹ ¹	Shipped installed HS Houseshield (black finish standard) ⁶ L90 Left rotated optics ⁷ R90 Right rotated optics ⁷ CCE Coastal Construction ⁸ HA 50% ambient operation ⁹ BAA Bay America's Act Compliant Single face (120, 277, 347V) ¹⁰ DF Double face (208, 240, 480V) ¹⁰ Shipped separately EGR External Glue Shield (reversible, field install required, matches housing finish) BSDB Bird Spikes (field install required)	DDBD Dark Bronze DBLD Black DNAX Natural Aluminum DWHD White DDBTD Textured dark bronze DBLBD Textured black DNATD Textured natural aluminum DWNGD Textured white



Section 1: Project Information
 Energy Code: 2009 IECC
 Project Title: Project Type: New Construction
 Exterior Lighting Zone: 2 (Residential mixed use area (L22))
 Construction Site: Owner/Agent: Designer/Contractor:

Section 2: Exterior Lighting Area/Surface Power Calculation

A Exterior Area/Surface	B Quantity	C Allowed Watts / Unit	D Tradable Wattage	E Allowed Watts (B x C)	F Proposed Watts
Special feature area	21746 R2	0.14	Yes	3044	33
Walkway < 10 feet wide	588 ft of walkway length	0.7	Yes	412	91
Parking area	45960 R2	0.06	Yes	2752	132
Total Tradable Watts** =				6208	257
Total Allowed Watts** =				6208	
Total Allowed Supplemental Watts** =				600	

* Wattage tradeoffs are only allowed between tradable areas/surfaces.
 ** A supplemental allowance equal to 600 watts may be applied toward compliance of both non-tradable and tradable areas/surfaces.

Section 3: Exterior Lighting Fixture Schedule

Fixture ID - Description / Lamp / Wattage Per Lamp / Ballast	A	B	C	D	E
	Lamps	# of Fixtures	Wattage	Fixture (C x D)	
Parking area (45960 R2): Tradable Wattage	1	1	33.2	33.2	
LED: P2: POLE: Other:	1	3	33.2	99.6	
LED: P1: POLE: Other:	1	3	33.2	99.6	
Walkway < 10 feet wide (588 ft of walkway length): Tradable Wattage	1	13	7	91	
LED: W1: WALLPACK: Other:	1	13	7	91	
Special feature area (21746 R2): Tradable Wattage	1	1	33.2	33.2	
LED: P3: POLE: Other:	1	1	33.2	33.2	
Total Tradable Proposed Watts =				257	

Section 4: Requirements Checklist

- Lighting Wattage:**
- 1. Within each non-tradable area/surface, total proposed watts must be less than or equal to total allowed watts. Across all tradable areas/surfaces, total proposed watts must be less than or equal to total allowed watts.
- Compliance: Passes.**
- Controls, Switching, and Wiring:**
- 2. All exemption claims are associated with fixtures that have a control device independent of the control of the nonexempt lighting.
 - 3. Lighting not designated for dusk-to-dawn operation is controlled by either a photosensor (with time switch), or an astronomical time switch.

Project Title: Data Filename: Report date: Page 1 of 2



Specifications
 EPA: 0.44 ft² (0.04 m²)
 Length: 26.18" (66.5 cm)
 Width: 14.06" (35.7 cm)
 Height H1: 2.26" (5.7 cm)
 Height H2: 7.46" (18.9 cm)
 Weight: 23 lbs (10.4 kg)

D-Series Size 0 LED Area Luminaire



Series	
LEDs	
Color temperature	
Color Rendering Index	
Distribution	
Voltage	
Mounting	

Introduction

The modern styling of the D-Series features a highly refined aesthetic that blends seamlessly with its environment. The D-Series offers the benefits of the latest in LED technology into a high performance, high efficacy, long-life luminaire.

The photometric performance results in sites with excellent uniformity, greater pole spacing and lower power density. D-Series outstanding photometry aids in reducing the number of poles required in area lighting applications, with typical energy savings of 70% and expected service life of over 100,000 hours.

Ordering Information

DSX0 LED	Series	LEDs	Color temperature ¹	Color Rendering Index ²	Distribution	Voltage	Mounting	Shipped included				
DSX0 LED	Forward optics	(this section 70CRI only)		70CRI	TSM Type V medium	MVOLT 120V-277V ¹	SPA Square pole mounting (8" drilling, 3" min. 50 pole)	SPA Square pole mounting (8" drilling, 3" min. 50 pole)				
		P1 P5	30K 3000K						T15 Type I short	HVOLT 347V-480V ¹	RPA Round pole mounting (8" drilling, 3" min. 50 pole)	
		P2 P6	40K 4000K						T3M Type II medium	IVOLT 277V-480V ¹	SMS Square pole mounting (8" drilling, 3" min. 50 pole)	
		P3 P7	50K 5000K						T5W Type IV wide	120 v.l.n.	BLCA Type II backlight control ³	
		P4	(this section 80CRI only, extended lead times apply)						T3LG Type III low glare ⁴	208 v.l.n.	BLCA Type IV backlight control ³	
		P10 ¹ P12 ¹	27K 2700K						T4M Type IV medium	240 v.l.n.	BLCC Type IV backlight control ³	
		P11 ¹ P13 ¹	30K 3000K						T4W Type IV wide	277 v.l.n.	BLCO Left corner cutoff ³	
Rotated optics	P10 ¹ P12 ¹ P11 ¹ P13 ¹	27K 2700K	80CRI	T4LG Type IV low glare ⁴	240 v.l.n.	LCCO Left corner cutoff ³	347 v.l.n.	SPASN Square narrow pole mounting (8" drilling, 3" min. 50 pole)				
									30K 3000K	T4M Type IV medium	277 v.l.n.	RCCO Right corner cutoff ³
									35K 3500K	T4W Type IV wide	277 v.l.n.	WBA Wall bracket ⁵
									40K 4000K	T4M Type IV medium	277 v.l.n.	MA Mast arm adapter (mounts on 2.38" OD horizontal track)
									50K 5000K	T4W Type IV wide	277 v.l.n.	
										T4M Type IV medium	277 v.l.n.	
										T4W Type IV wide	277 v.l.n.	

Control options	Other options	Finish required
Shipped installed N1AIR2 P1RH1 n-light AIR gen 2 enabled with bi-level motion / ambient sensor, 8-40" mounting height, ambient sensor enabled at 26" ¹ 11.8" ¹ P1R High/low motion/ambient sensor, 8-40" mounting height, ambient sensor enabled at 26" ¹ 11.8" ¹ PER NEMA twist lock receptacle only (controls ordered separately) ¹ ¹ PER5 Five-pin receptacle only (controls ordered separately) ¹ ¹	Shipped installed HS Houseshield (black finish standard) ⁶ L90 Left rotated optics ⁷ R90 Right rotated optics ⁷ CCE Coastal Construction ⁸ HA 50% ambient operation ⁹ BAA Bay America's Act Compliant Single face (120, 277, 347V) ¹⁰ DF Double face (208, 240, 480V) ¹⁰ Shipped separately EGR External Glue Shield (reversible, field install required, matches housing finish) BSDB Bird Spikes (field install required)	DDBD Dark Bronze DBLD Black DNAX Natural Aluminum DWHD White DDBTD Textured dark bronze DBLBD Textured black DNATD Textured natural aluminum DWNGD Textured white

LITHONIA LIGHTING One Lithonia Way • Conyers, Georgia 30012 • Phone: 1-800-705-SERV (7378) • www.lithonia.com
 © 2011-2023 Acuity Brands Lighting, Inc. All rights reserved.



Specifications
 Depth (D1): 7"
 Depth (D2): 1.5"
 Height: 9"
 Width: 11.5"
 Weight: 13.5 lbs (without options)

WDGE2 LED Architectural Wall Sconce Visual Comfort Optic



Series	
Package	
Color Temperature	
Color Rendering Index	
Distribution	
Voltage	
Mounting	

Introduction

The WDGE2 LED family is designed to meet specifier's every wall-mounted lighting need in a widely accepted shape that blends with any architecture. The clean, rectangular design comes in four sizes with lumen packages ranging from 1,200 to 25,000 lumens, providing a true site-wide solution. Embedded with nLight® AIR wireless controls, the WDGE2 family provides additional energy savings and code compliance.

WDGE2 delivers up to 6,000 lumens with a soft, non-pixelated light source, creating a visually comfortable environment. When combined with multiple integrated emergency battery backup options, including an 18W cold temperature option, the WDGE2 becomes the ideal wall-mounted lighting solution for pedestrian scale applications in any environment.

WDGE LED Family Overview

Luminaire	Optics	Standard EIA, 0°C	Cold EIA, 20°C	Sensor	Approximate Lumens (4000K, 80CRI)						
					P0	P1	P2	P3	P4	P5	P6
WDGE1 LED	Visual Comfort	4W			750	1,200	2,000	—	—	—	—
WDGE2 LED	Visual Comfort	10W	18W	Standalone /light	—	1,200	2,000	3,000	4,500	6,000	—
WDGE3 LED	Precision Reflective	10W	18W	Standalone /light	700	1,200	2,000	3,200	4,200	—	—
WDGE1 LED	Precision Reflective	15W	18W	Standalone /light	—	7,500	8,500	18,000	12,000	—	—
WDGE4 LED	Precision Reflective			Standalone /light	—	12,000	16,000	18,000	20,000	22,000	25,000

Ordering Information

Series	Package	Color Temperature	CR	Distribution	Voltage	Mounting	Shipped separately
WDGE2 LED	P1	P15W	27K 2700K	80CRI	VF	Visual comfort forward throw	WVOLT
	P2	P15W	30K 3000K	90CRI	VF	Visual comfort forward throw	SMS